

P.O. Box 14460
St. Louis, MO 63178-4460
114 Old State Road
Ellisville, MO 63021
Phone: (636) 527-1270



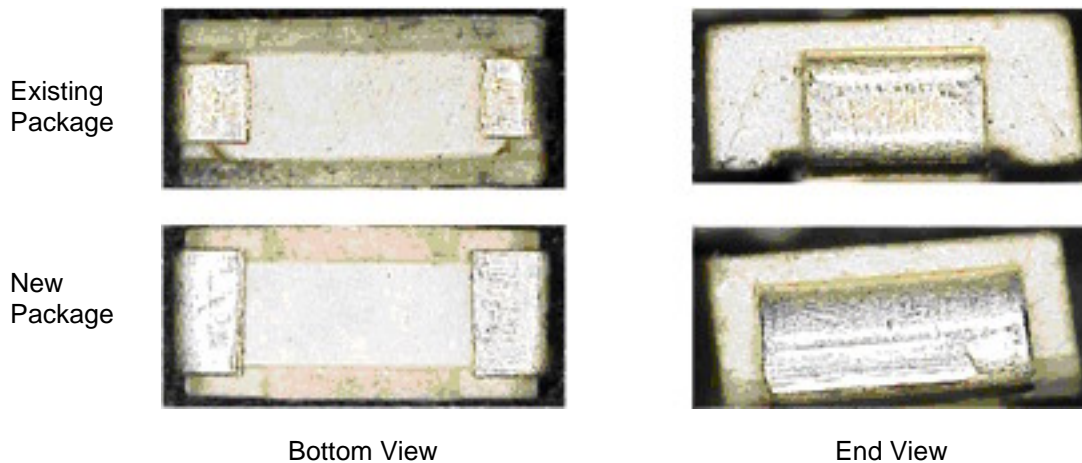
Product Change and End of Life Notification

Date: April 19, 2010

To: 3216TD Customers

Subject: 3216TD Series Chip™ Fuse Product Change Notification and
End-of-Life Notification for Select Ratings

Cooper Bussmann has changed the construction of the TR/3216TDxx-R Series fuses. The change (illustrated below) provides more contact area between the fuse and the PCB to improve IR reflow soldering process performance. This change does not affect the fuses' electrical performance. This change will become effective June 1, 2010.



In addition to the change in construction, the TR/3216TDxx-R Series fuse ratings of 5A and below will become EOL. Final orders for these ratings will be accepted until June 30, 2010.

The part numbers affected by this EOL are:

TR/3216TD500-R	TR/3216TD750-R	TR/3216TD800-R	TR/3216TD1-R
TR/3216TD1.5-R	TR/3216TD2-R	TR/3216TD2.5-R	TR/3216TD3-R
TR/3216TD4-R	TR/3216TD5-R		

The recommended replacement fuse for these ratings is CC12Hxx-TR Series. For technical specifications of the CC12H Series fuses, see data sheet 4309 at www.cooperbussmann.com/datasheets/elx.

Thank you for your business and cooperation during this upcoming transition.

Michael Guo
Product Manager
Electronics Circuit Protection
Cooper Bussmann